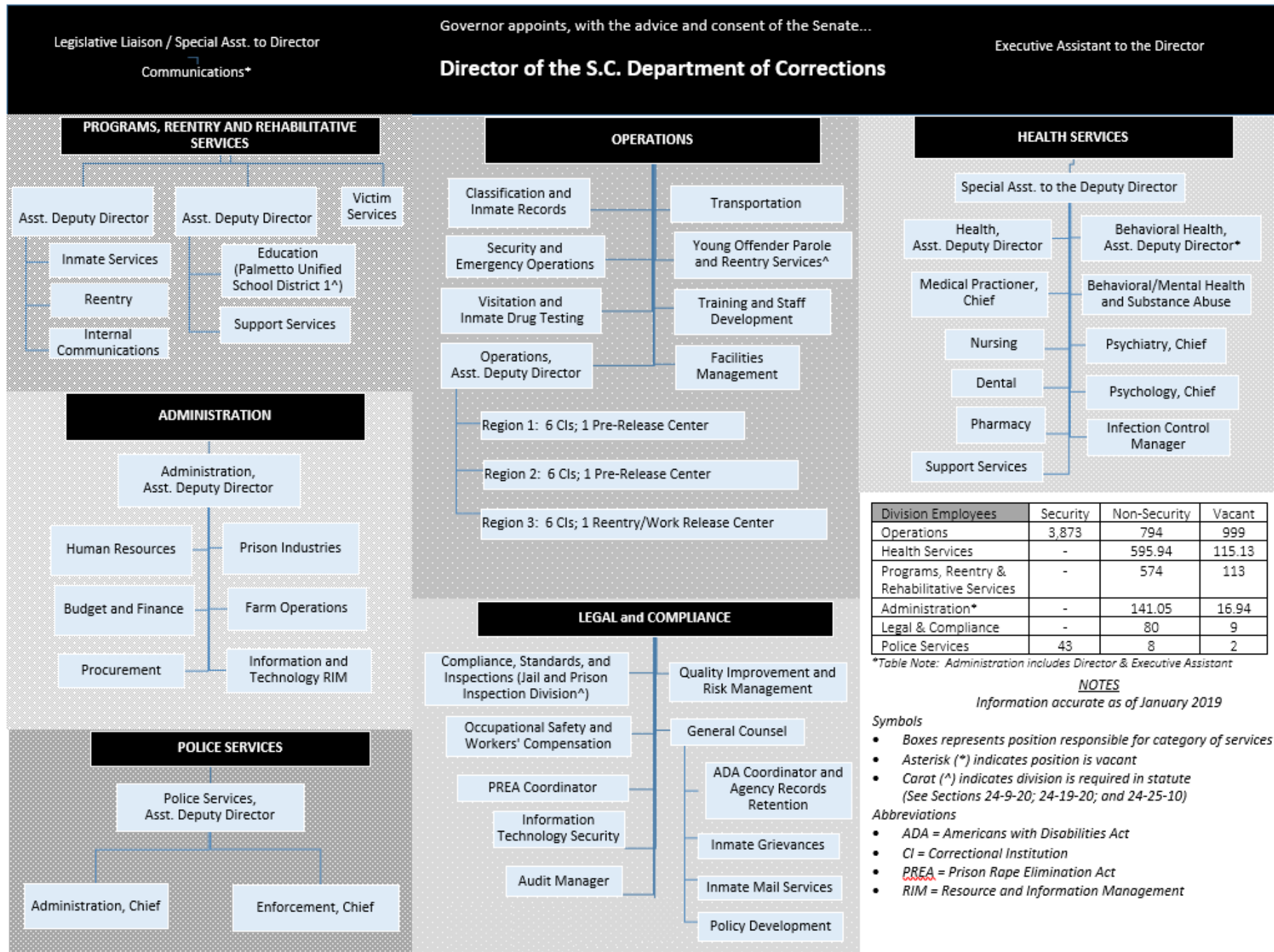


ORGANIZATIONAL CHART AND STAFFING





Agency

Organizational Chart

The mission of the South Carolina Department of Corrections is: Safety--we will protect the public, our employees, and our inmates. Service--we will provide rehabilitation and self-improvement opportunities for inmates. Stewardship--we will promote professional excellence, fiscal responsibility, and self-sufficiency.



Bryan P. Stirling
Agency Director



Dayne Haile
Executive Assistant



Brian Bolchoz
Deputy Director

Police Services



Nena Walker-Staley
Deputy Director

Programs, Reentry, &
Rehabilitative Services



Terre K. Marshall
Deputy Director

Health Services



Michael McCall
Deputy Director

Operations



Salley Elliott
Chief Legal & Compliance
Officer

Legal Counsel
& Compliance



Thomas Osmer
Deputy Director

Administration



Dexter Lee

Legislative Liaison/
Special Assistant to the
Director

Programs, Reentry, and Rehabilitative Services

The mission of the Division of Programs, Reentry and Rehabilitative Services is to maintain and manage Agency resources while providing quality programs and services in a safe, responsive, effective and courteous manner.

The following are under this division:

- Education (Palmetto Unified School District 1)
- Inmate Services
- Internal Communications
- Reentry
- Support services
- Victim Services



Operations

Oversees daily operations of the SCDC's 21 correctional institutions as well as the following:

- Division of Classification and Inmate Records,
- Training and Staff Development,
- Facilities Management,
- Inmate Visitation and Drug Testing, and
- Young Offender Parole and Reentry Services.



Health Services

Includes the following to provide a comprehensive continuum of healthcare:

- Medical Practitioner
- Behavioral/Mental Health and Substance Abuse
- Nursing
- Psychiatry
- Pharmacy
- Psychology
- Dental
- Infection Control



Administration

The Division of Administration is responsible for the following:

- All agency
 - Human Resources
 - Finance
 - Information Technology
 - Procurement
- Farm operations
- Prison industry operations



Police Services

Assigns agents needed to investigate criminal acts which are believed to have been committed by SCDC inmates, employees, or others when the crime relates to the agency.

NOTE: This is different than security within the prisons



Legal and Compliance

Oversees all Legal and Compliance related functions including:

- Compliance, Standards and Inspections
- Occupational Safety and Worker's Compensation
- Prison Rape Elimination Act Coordinator
- Information Security and Privacy
- Audit Manager
- Quality Improvement and Risk Management
- Americans with Disabilities Act Coordinator
- General Counsel's Office, which includes:
Agency Records Retention, American with Disabilities Act Coordinator, Inmate Grievance, Agency Mailroom and Policy Development

